

Heavy Duty Satin Floor Polish


Jangro

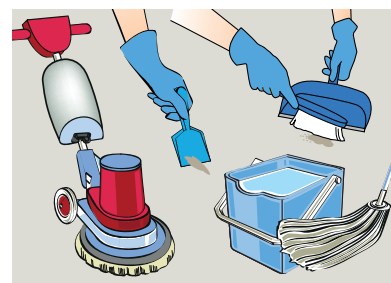
Product Usage Guide

PREMIUM

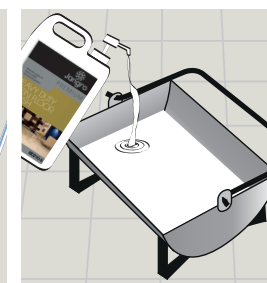
BD210-5



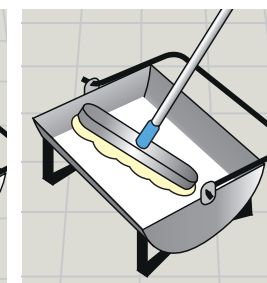
1 Use appropriate PPE as indicated in the Safety Data Sheet and place Safety Signs.



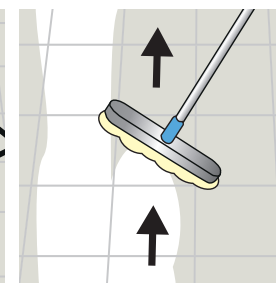
2 Prepare the floor, remove all traces of old polish/sealer. Ensure floor is clean dry and neutral.
Refer to the Jangro Floor Care Chart or the Product Usage Guide for floor polish remover guidance on floor preparation.



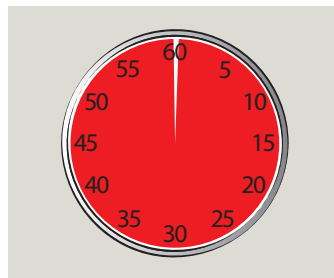
3 Pour polish into bucket or tray. (undiluted).



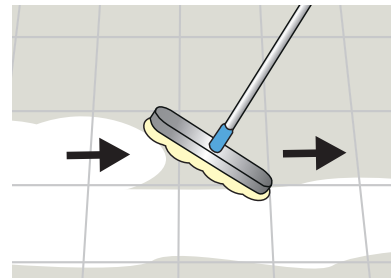
4 Place flat mop or applicator into polish. Remove surplus.



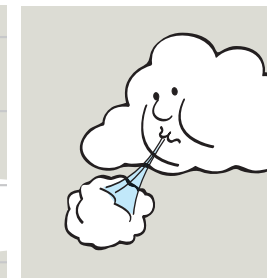
5 Apply polish to dry floor, thinly and evenly in straight lines.



6 Leave to dry thoroughly. Approximately 1 hour.



7 Ensure floor is free from debris/dust before applying a second coat. Apply in opposite direction to the first. Leave a 2.5-5cm gap from the edge.



8 Leave to dry. Light traffic 4-8 hours, heavy traffic 24-48 hours.



9 Remove Safety Signs.



10 For best results, maintain with Jangro Perfumed Floor Maintainer. BD030-5.

Health & Safety

Please refer to relevant COSHH Safety Data Sheet



Scan for further product details



A third coat may be required on old worn floors.

www.jangro.net